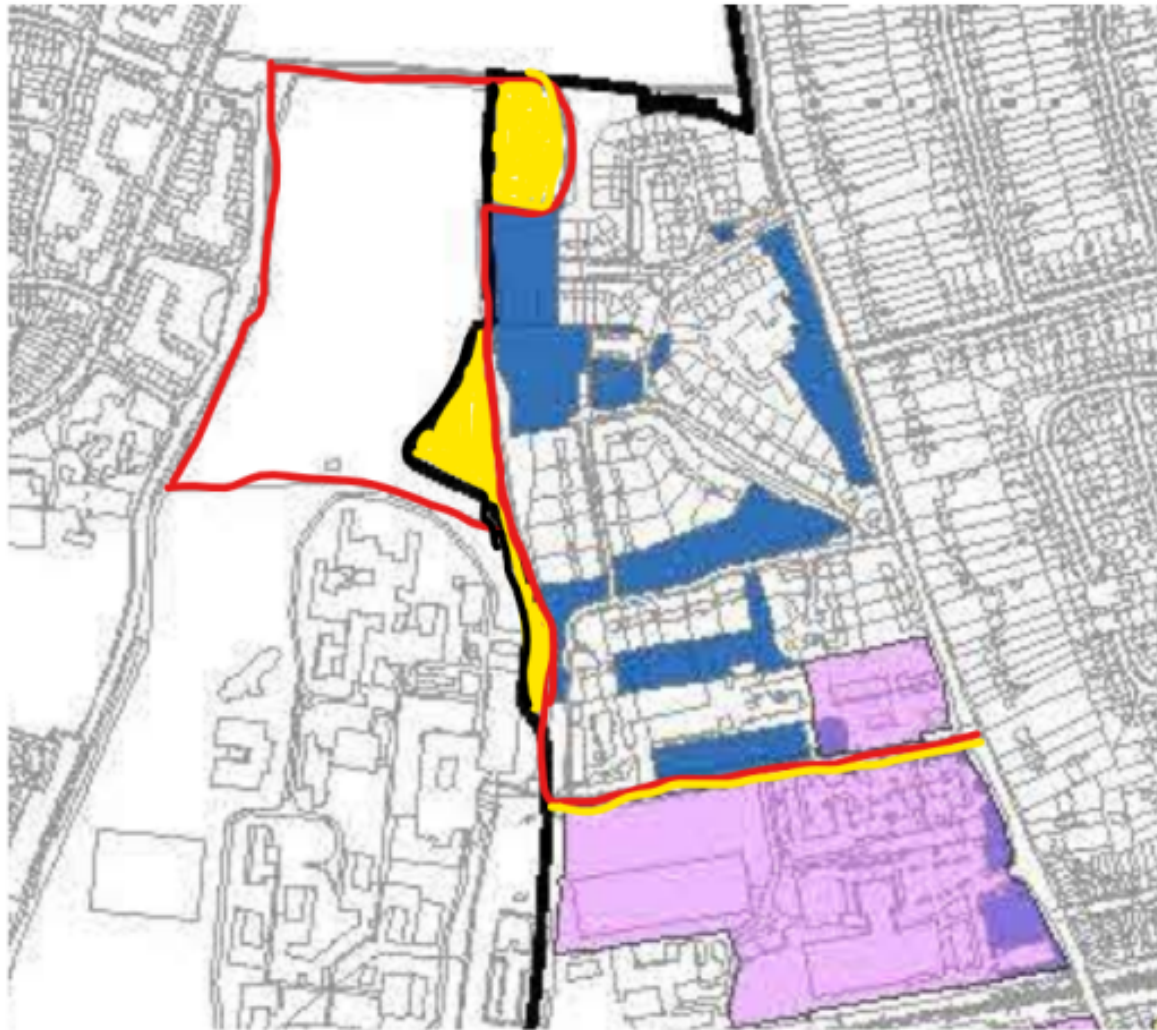


Development Control Committee
Thursday, 15 December 2022, 7.00 pm

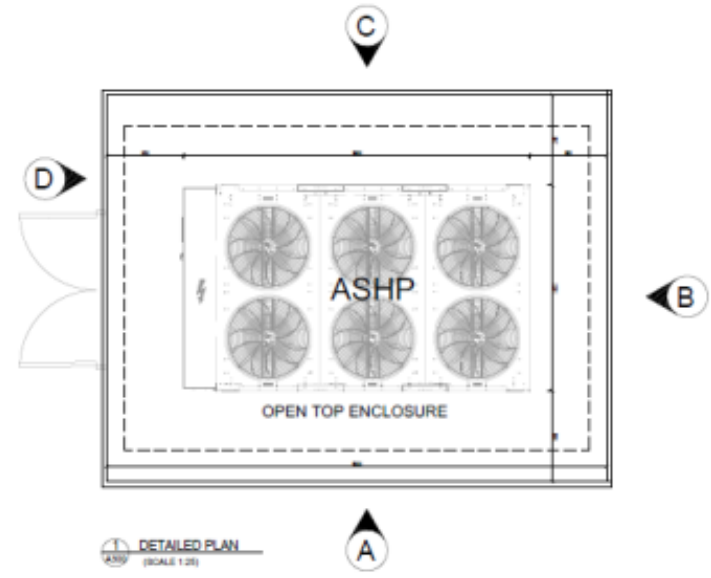
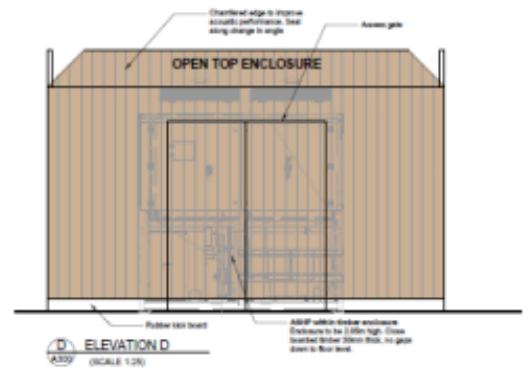
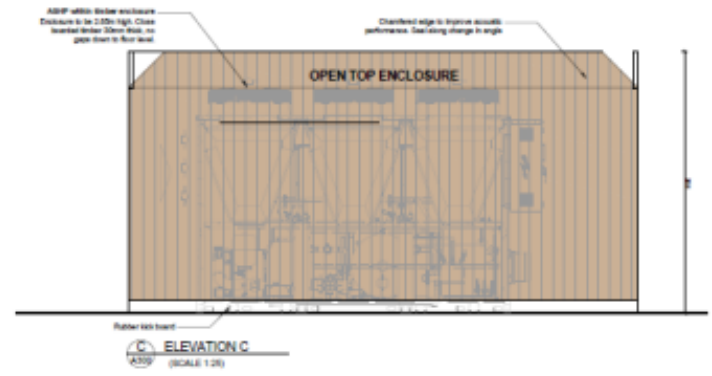
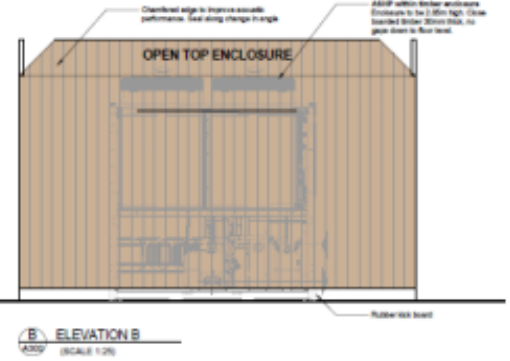
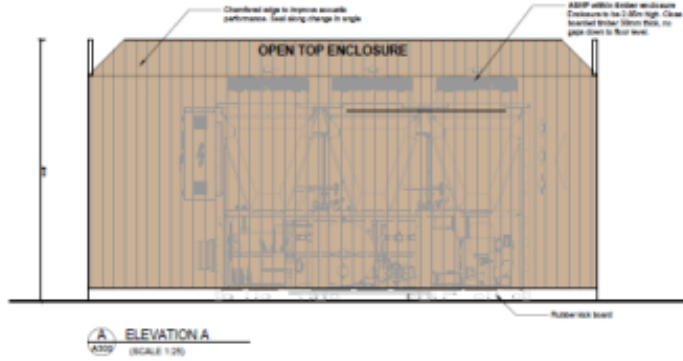


**Report of the Planning Policy and
Development Manager**
Officers' Presentation (December 2022)

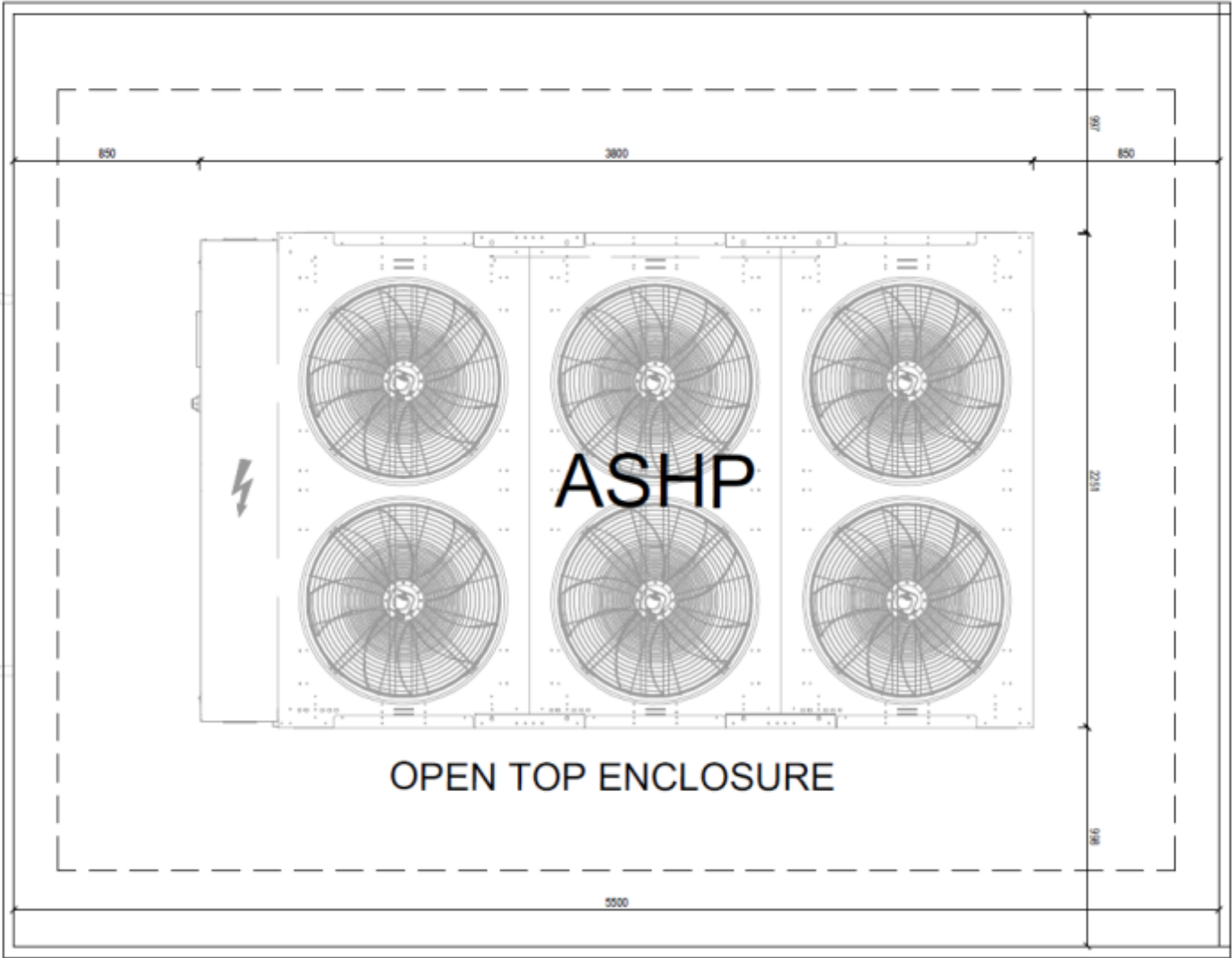


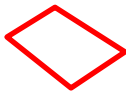


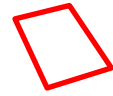




D







NEAREST CLASSROOM WINDOW

PROPOSED PLANT LOCATION

NEAREST RESIDENTIAL FACADE

AIR SIDE SOUND PRESSURE

54 @ 1m
55dB @ 10m

Barrier Allowance -15

Distance Correction for 25m = -4.2dB

Resultant Noise at nearest window =
47-15=32dB

COMPOUND SIZE 5.3m x 4.2m

